

## COMPATIBILITY TEST OF FORMATION WATER AND WASTE WATER AT OGBOGU GRA-OML58

OML 58 is located in Ogba/Egbema/Ndoni Local Government Area (ONELGA), approximately 80km Northwest of Port Harcourt, Rivers State. Ogbogu flow station operates under OML58 license in onshore environment. Operations in this facility are associated with waste water generation from various sources such as production activities, maintenance operation, treatment process, storm water, etc. The generated waste water are contained in the pits prior to treatment for onshore disposal or injection into wells.

To this effect, TEPNG engaged the services of Giolee Global Resources Ltd to study compatibility of the surface water with formation water within reservoir-level10 (OB93/5B) where the injection well OB47 is located. The study was carried out in accordance with TEPNG HSE requirement. In addition, methods were in line with the Department of Petroleum Resources' (DPR) EGASPIN (2018) and Federal Ministry of Environment (FMEnv) Guidelines (1991).

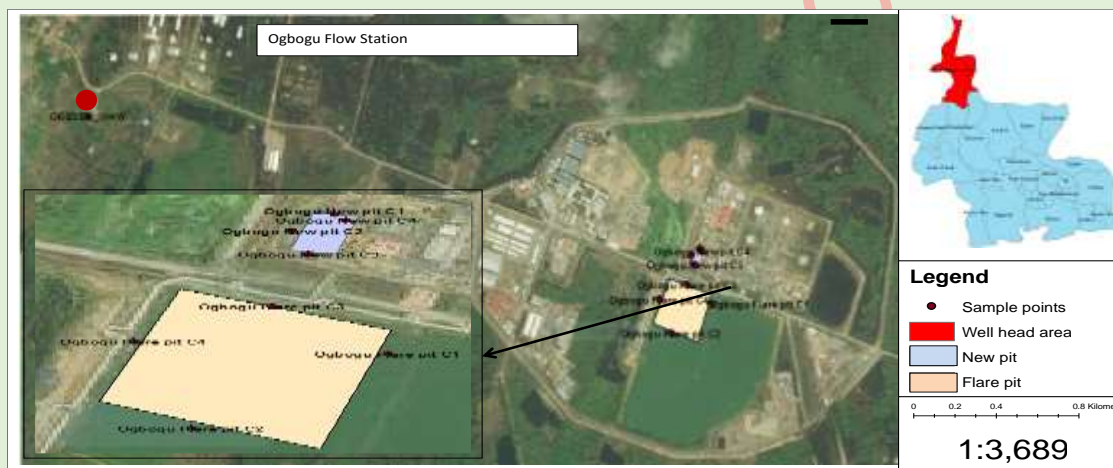


Figure 1: Ogbogu FS Facilities showing the New Pit (at the east end of Ogbogu Flow station), the Flare pit (located inside the Obagi Global Restricted Area (GRA)) and OB93/5B Well (located within OB35 Well head location at Obagi community).



Plate 2: New Pit in Ogbogu Flow Station



Plate 3: Obagi Flare Pit



Plate 4: OB93/5B Well Head area



Plate 5: Surface Water Collection from Flare Pit at OB93/5B



Plate 6: Formation water collection



Plate 1: Surface Water Sampling at New Pit



Plate 2: : H<sub>2</sub>S Gas Testing at New Pit